



**PHILIPS**

Automated  
External Defibrillator

HeartStart HS1



# Products and services expanding defibrillator performance

Philips HeartStart HS1 AED supplies and accessories

## Carry cases

There are three carry cases available for the Philips HeartStart HS1 AED: the standard carry case, the slim carry case and the plastic waterproof hardshell carry case. The standard and slim cases are constructed with semi-rigid materials and covered in durable red Cordura®. A window pocket inside both the standard and slim cases holds the HS1 Quick Reference Guide.



### **Standard carry case**

Item # M5075A

In addition to the HS1, the standard carry case can accommodate one spare pads cartridge and a spare battery. It also comes equipped with a pair of paramedic scissors.



### **Slim carry case**

Item # M5076A

The slim carry case holds the HS1 and a pair of paramedic scissors.



### **Plastic waterproof hardshell carry case**

Item # YC

Our waterproof carry case made of hard-shell plastic is suited for more rigorous use, particularly in wet outdoor settings. It can also accommodate a spare battery, spare pads cartridge and the contents of the Fast Response Kit.

# Signage and wall-mounting solutions

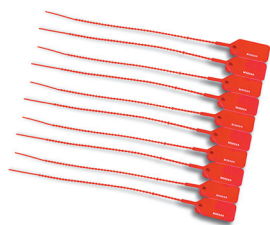
Philips AED wall mount bracket and specialized signage let you strategically place defibrillators for fast access and response, and raise awareness by increasing the visibility of AEDs.



## AED wall mount bracket

Item # 989803170891

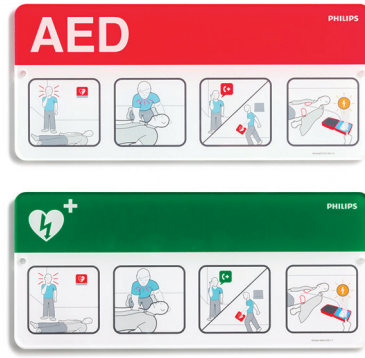
The wall mount bracket is designed specifically for housing a Philips HeartStart defibrillator and its accessories. The defibrillator's carry case can be tethered to the wall mount bracket with a breakaway secure-pull seal (M3859A) to discourage tampering. A broken seal indicates that the defibrillator has been removed from the wall mount and accessories may need to be replenished. The Fast Response Kit (68-pchat) tucks neatly behind the defibrillator case.



## Secure-pull seal

Item # M3859A

Secure plastic pull seal for attaching defibrillator case to wall mount or cabinet. Seal intended to deter theft and indicate tampering, yet is easy to "break away" for use during an emergency. Recommended for all customers purchasing wall mount brackets.



## AED awareness placard

Item # 989803170901 (red)

Item # 989803170911 (green)

Raise awareness by putting an AED awareness placard above every AED located in a public area. Easy-to-understand graphics raise awareness of passers-by about how to use an AED in an emergency. Great for office settings, sports clubs, public facilities, school settings and more.



## AED wall sign

Item # 989803170921 (red)

Item # 989803170931 (green)

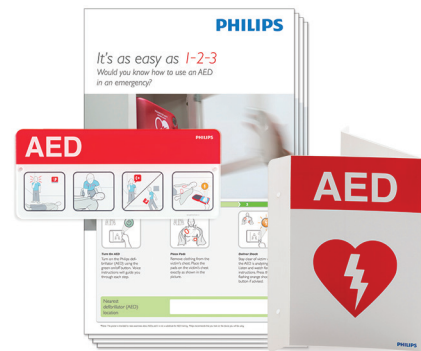
An AED wall sign hanging above a wall mount bracket or defibrillator cabinet gives even greater visibility to the defibrillator. Can be mounted three different ways to maximize visibility: T-mount, V-mount or corner mount.



## AED awareness poster pack

Item # 861476

Place these posters away from the AED, in break areas, copy rooms or locker rooms – anywhere that employees or members of the public can take a moment to raise their awareness about AEDs. Includes space for the AED coordinator to write in the location of the nearest AED. Pack of four posters. Available in English, Spanish, French, Japanese and Italian.



## AED signage bundle

Item #861478

A convenient bundle designed for AEDs already housed in a cabinet or bracket. The wall sign, awareness placard and four awareness posters included in this bundle increase the visibility of the AED and help to raise awareness of employees, members of the public and other passers-by.

# Cabinets

To help mobilize an emergency medical response or deter AED theft, Philips offers three different wall cabinets. The basic cabinet has a simple audible alarm. Also available are two premium cabinets: a wall surface-mounted cabinet and a semi-recessed cabinet that is inserted into a wall cut-out for a less obtrusive look.\* The premium cabinets feature combination audible and flashing light alarms. They are made of sturdy heavy-gauge steel, and are large enough to accommodate additional medical supplies. You can also connect the premium cabinets' alarms to your internal security system so that a more coordinated emergency response can be mobilized centrally.



**Basic surface-mounted cabinet**  
Item # 989803136531

**Dimensions**

16.5 x 11.75 x 6 in (42 x 29.8 x 15 cm)  
W x H x D



**Premium surface-mounted cabinet**  
Item # PFE7024D

**Dimensions**

16 x 22 x 6 in (41 x 56 x 15 cm)  
W x H x D



**Premium semi-recessed cabinet**  
Item # PFE7023D

**Dimensions**

**Recessed compartment**  
14.25 x 22 x 3.5 in (36 x 56 x 9 cm)  
W x H x D

**Footprint on wall**

16.25 x 24.5 x 2.5 in (41 x 62 x 6 cm)  
W x H x D

\* The Americans with Disabilities Act requires that objects not protrude more than 4 inches into foot traffic areas of open aisles and walkways unless the object's bottom edge is no higher than 27 inches from the ground.

# SMART Pads Cartridges



## Adult SMART Pads Cartridge

Item # M5071A

HeartStart Adult SMART Pads are appropriate for cardiac arrest victims weighing 55 lb (25 kg) or more.

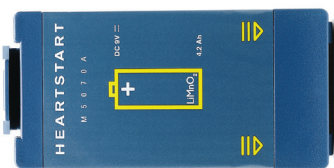


## Infant/Child SMART Pads Cartridge

Item # M5072A

Infants and children under 55 lb (25 kg) or 0–8 years old, should be treated using HeartStart Infant/Child SMART Pads, if available. These pads instruct the defibrillator to provide voice instructions appropriate for a pediatric patient, and to reduce the energy of its shock from 150 to 50 Joules, a more appropriate dosage.<sup>1,2</sup> The Infant/Child Pads Cartridge is marked with an indication of patient weight and with a teddy bear icon for easy identification. Purchase of this product requires a prescription.

# Additional accessories



## Long-Life Battery

Item # M5070A

The HS1 uses a disposable, lithium manganese dioxide, long-life battery with a five-year shelf life plus a (typical) four-year installed life. A spare battery should be stored with the defibrillator. Additional batteries should be purchased for defibrillators used frequently for training or demonstrations.



## Fast Response Kit

Item # 68-PCHAT

The Fast Response Kit contains tools and supplies typically needed for patient care and personal protection: two pairs of hypoallergenic nitrile gloves, a pocket breathing mask, paramedic scissors, a chest hair razor and a large extra-absorbent paper towel. These items are housed in a zippered pouch which attaches securely to the handle of the carry case.

1. Tang, et al. Fixed-energy biphasic waveform defibrillation in a pediatric model of cardiac arrest and resuscitation. Crit Care Med. 2002 Dec;30(12):2736–41. DOI: 10.1097/00003246-200212000-00019. PMID: 12483066.
2. Cecchin, et al. Is Arrhythmia Detection by Automatic External Defibrillator Accurate for Children? Sensitivity and Specificity of an AED Algorithm in 696 Pediatric Arrhythmias. Circulation. 2001;103:2483–2488.